




RENTS™

ALL YOU NEED



**We rent what we sell.
We sell what we rent.
We service what we sell and rent!**

TILTON, NH
603-286-4101
10 Bittern Ln PO Box 289

SOMERSWORTH, NH
207-439-1777
355 NH-108

PLAISTOW, NH
603-382-5031
194 Plaistow Rd, Rt 125 PO Box 487

CONWAY, NH
603-447-2696
38 Towle Rd

W. SPRINGFIELD, MA
413-536-8901
1497 Riverdale St

N. READING, MA
781-938-8880
75 Concord St

FAIRFIELD, ME
207-453-9363
40 Skowhegan Rd

GORHAM, ME
207-839-4500
500 Ossipee Trl, Rt 25

S. WINDSOR, CT
860-500-5022
1249 John Fitch Blvd

www.MBTRACTOR.com

PRICES AND EQUIPMENT SUBJECT TO CHANGE WITHOUT NOTICE. RATES DO NOT INCLUDE TRANSPORTATION

CHIPPERS AND STUMP GRINDERS

Chippers	Day	Week	Month
6" Towable	\$240	\$850	\$2,250
12" Towable	\$340	\$1,300	\$2,850
Stump Grinder	Day	Week	Month
Self Propelled	\$260	\$1,015	\$2,290



COMPACTION - SOIL

Plate: Single Direction	Day	Week	Month
200 lbs with 3375 lbs of Force	\$85	\$310	\$720
Plate: Reversible	Day	Week	Month
400 lbs with 6750 lbs of Force	\$150	\$450	\$1300
700 lbs with 7875 lbs of Force	\$210	\$650	\$1,700
Dirt Rollers	Day	Week	Month
8 Ton, 66" Drum	\$445	\$1,665	\$3,850
12 Ton, 84" Drum	\$550	\$2,080	\$4,890



EXCAVATOR ATTACHMENTS

Hydraulic Breakers	Day	Week	Month
150 lb Class (Fits Kubota K008)	\$200	\$800	\$1,600
500 lb Class (Fits Kubota KX121, KX040)	\$350	\$1,350	\$2,500
750 lb Class (Fits Kubota U55, KX057)	\$420	\$1,670	\$3,330
1,000 lb Class (Fits Kubota KX080)	\$575	\$2,200	\$4,160
3,000 lb Class (Fits 16 metric ton)	\$680	\$2,500	\$4995
Flail and Mulch Heads	Day	Week	Month
Flail Head (Fits Kubota KX040)	\$315	\$850	\$2,080
Mulch Head (Fits Kubota KX057, U55)	\$525	\$2,100	\$4,200
Hydraulic Grading Buckets	Day	Week	Month
48" (Fits Kubota KX040)	\$150	\$475	\$1,050
52" (Fits Kubota KX057)	\$195	\$525	\$1,125
54" (Fits Kubota KX080)	\$225	\$605	\$1,195
Ripper	Day	Week	Month
(Fits Kubota KX080, KX040, KX057, UFF)	\$75	\$250	CALL

EXCAVATORS

Tracked	Day	Week	Month
2,000 lb Class	\$235	\$940	\$1,925
4,000 lb Class	\$265	\$980	\$2,200
7,000 lb Class	\$325	\$1,200	\$2,900
9,000 lb Class	\$355	\$1,425	\$3,150
10,000 lb Class	\$390	\$1,490	\$3,300
12,000 lb Class	\$415	\$1,590	\$3,700
19,000 lb Class	\$545	\$1,815	\$4,500
38,000 lb Class (Road Liners)	\$825	\$2,210	\$5,600
39,000 lb Class	\$860	\$2,400	\$6,150



PRICES AND EQUIPMENT SUBJECT TO CHANGE WITHOUT NOTICE.
RATES DO NOT INCLUDE TRANSPORTATION.

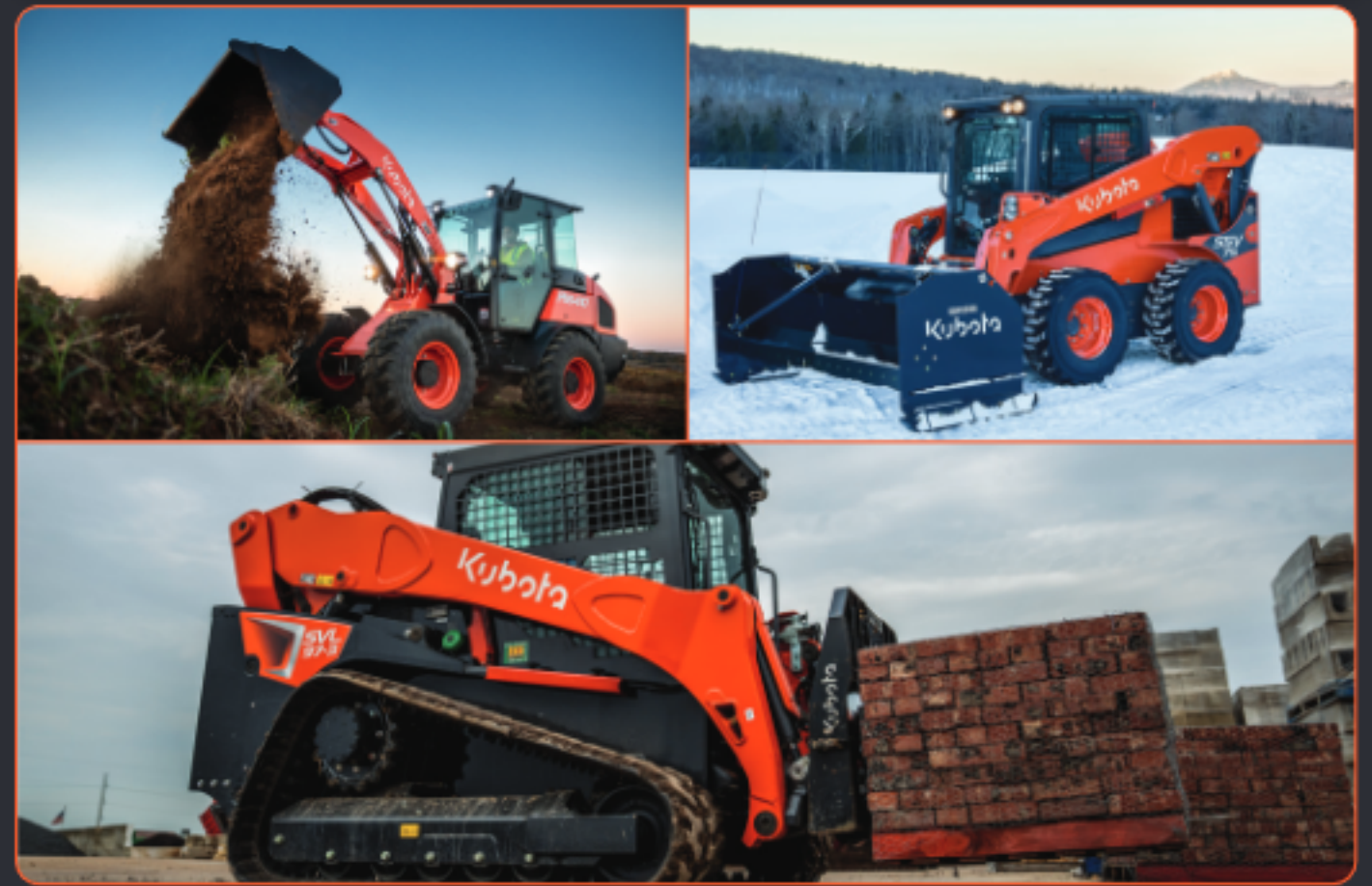
LIFTS

Self Propelled	Day	Week	Month
34' Articulating - Tracked	\$250	\$940	\$2,395
42' Articulating - Tracked	\$290	\$1,150	\$2,860
40' Telescopic - Wheeled	\$340	\$1,200	\$2,400
45' Articulating - Wheeled	\$340	\$1,200	\$2,400
60' Articulating - Wheeled	\$495	\$1,350	\$3,000
64' Telescopic - Wheeled	\$315	\$1,250	\$3,750
60' Telescopic - Wheeled	\$495	\$1,350	\$3,000
80' Telescopic - Wheeled	\$625	\$1,950	\$4,000
Scissor Lifts	Day	Week	Month
19' Electric Interior	\$165	\$425	\$700
26' Electric Interior	\$220	\$500	\$885
26' Dual Fuel AWD Exterior	\$295	\$700	\$1,550
33' Dual Fuel AWD Exterior	\$350	\$850	\$1,750
43' Dual Fuel AWD Exterior	\$395	\$1,050	\$1,950
Fork Lifts - All Terrain Telescopic	Day	Week	Month
4,000 lbs, 20'	\$425	\$1,175	\$2,200
6,000 lbs, 43'	\$425	\$1,375	\$2,900
9,000 lbs, 43'	\$495	\$1,495	\$3,200
10,000 lbs, 55'	\$850	\$2,395	\$3,995



WHEELED/SKID STEER LOADERS

Articulating Wheel	Day	Week	Month
1 Yard	\$365	\$1,400	\$2,900
1.5 Yard	\$425	\$1,800	\$3,500
CTL-Compact Tracked Loader	Day	Week	Month
800 lb Operational Load (SVL50X)	\$295	\$995	\$2,500
1,900 lb Operational Load (SVL65)	\$320	\$1,200	\$3,200
2,750-3,100 lb Operational Load (SVL75)	\$350	\$1,250	\$3,400
3,800-4,000 lb Operational Load (SVL 95/97)	\$395	\$1,550	\$3,700
Wheeled Skid Steer	Day	Week	Month
2,000 - 2,500 lb Operational Load (SSV65)	\$260	\$1,050	\$2,400
2,800 lb Operational Load (SSV75)	\$290	\$1,200	\$2,900



SKID STEER ATTACHMENTS

Tracked and Wheeled	Day	Week	Month
HD Grapple	\$150	\$470	\$1,150
Hydraulic Post Hole Digger	\$170	\$600	\$1,560
Pallet Forks (For 1yd, CTL's, Wheeled)	\$55	\$160	\$420
Power Rake	\$185	\$625	\$1,560

* Normal auger bit wear is expected, however renter is responsible for broken bits and will be charged accordingly.



PRICES AND EQUIPMENT SUBJECT TO CHANGE WITHOUT NOTICE.
RATES DO NOT INCLUDE TRANSPORTATION.

LIGHT TOWERS

Towable	Day	Week	Month
---------	-----	------	-------

4000/6000 Watt Lights	\$195	\$450	\$950
-----------------------	-------	-------	-------

Rates listed are single shift 8 hours per day 176 hours per month

1.5x rate for double shift 16 hours per day 352 hours per month

2.0x rate for triple shift 24 hours per day 528 hours per month



UTILITY VEHICLES

	Day	Week	Month
--	-----	------	-------

2 Person, 4x4, Dump Bed, Diesel	\$225	\$795	\$1,500
---------------------------------	-------	-------	---------

4 Person, 4x4, Dump Bed, Diesel	\$185	\$495	\$1,200
---------------------------------	-------	-------	---------



TURF MAINTENANCE

	Day	Week	Month
--	-----	------	-------

Aerator - Ride On	\$315	\$1,250	\$2,500
-------------------	-------	---------	---------

Blower - Ride on	\$180	\$720	\$2,160
------------------	-------	-------	---------

Mower - Riding /Standing	\$130	\$520	\$1,355
--------------------------	-------	-------	---------



TRACTORS

Tractor Loader	Day	Week	Month
----------------	-----	------	-------

20 hp - 30 hp	\$235	\$895	\$1,995
---------------	-------	-------	---------

31 hp - 40 hp	\$280	\$1,050	\$2,175
---------------	-------	---------	---------

41 hp - 50 hp	\$260	\$895	\$2,180
---------------	-------	-------	---------

51 hp - 70 hp	\$280	\$1,040	\$2,395
---------------	-------	---------	---------

Tractor Loader Backhoe	Day	Week	Month
------------------------	-----	------	-------

6' Dig Depth	\$265	\$925	\$2,025
--------------	-------	-------	---------

7.5' Dig Depth	\$335	\$1,100	\$2,295
----------------	-------	---------	---------

Tractor Attachments	Day	Week	Month
---------------------	-----	------	-------

60" Brush Cutter	\$165	\$585	\$1,150
------------------	-------	-------	---------

Landscape Rake	\$80	\$315	\$625
----------------	------	-------	-------

Pallet Forks	\$55	\$160	\$420
--------------	------	-------	-------

Power Rake	\$185	\$625	\$1,560
------------	-------	-------	---------



GENERATORS

Towable	Day	Week	Month
---------	-----	------	-------

25 kw	\$300	\$750	\$1,650
-------	-------	-------	---------

45 kw	\$325	\$975	\$2,150
-------	-------	-------	---------

75 kw	\$525	\$1,300	\$2,550
-------	-------	---------	---------

Rates listed are single shift 8 hours per day 176 hours per month

1.5x rate for double shift 16 hours per day 352 hours per month

2.0x rate for triple shift 24 hours per day 528 hours per month

Generator Accessories	Day	Week	Month
-----------------------	-----	------	-------

50 amp Distribution Box	\$35	\$90	\$200
-------------------------	------	------	-------

Cables	\$25	\$50	\$125
--------	------	------	-------

**PRICES AND EQUIPMENT SUBJECT TO CHANGE WITHOUT NOTICE.
RATES DO NOT INCLUDE TRANSPORTATION.**

RENTAL POLICIES



For a temporary
Massachusetts
hoisting license please
scan this QR code

- When renting we require proof of insurance naming our equipment serial # specifically, or you must purchase our damage waiver insurance, or an additional 15% fee for duration of rental will be added.
- A valid driver's license and major credit card are required to rent.
- All rental charges are to be paid in full prior to the start of the rental.
- Rental rates are based on an 8-hour day, 40-hour week, and 176 hour month. Double-shift operations will result in charges of 1.5 times the rate. Triple-shift operations will result in charges of 2 times the rate.
- Rates include normal wear, not damage. Damage repairs will be charged at retail for parts and our shop's current labor rate at the time of damage.
- Customers are responsible for damages incurred from fire, flood, water, or vandalism.
- All rental contracts will be charged a \$75 cleaning and recycling deposit. The deposit is non-refundable if the unit is not returned clean. Additional cleaning charges may apply if cleaning the machine takes more than one (1) hour.
- Prices and equipment listed in this book may change at any time without notice.

RENTAL PURCHASE OPTIONS

Option 1: Buy Equipment Currently Renting

- Customers may elect to purchase equipment they are renting at any time, if available.
- 100% of the current month's rental will be applied as a down payment on the equipment if purchased within 30 days.
- All rentals must be paid on time in order to apply.

Option 2: Rent-to-Own

- Pre-qualified customers may rent a new or used piece of equipment for three months or less with 85% of the rental expense applied towards the purchase price.
- To be eligible for this program, customers must be pre-qualified and rent-to-own contracts must be established at the beginning of the rental contract or within the first 30 days.

WE ARE PROUD TO SELL ONLY THE BEST BRANDS!

EQUIPMENT AND ATTACHMENTS

AMI	FAE	RHINOX
AMERICAN	FECON	SCHULTE
ARIENS	FERRI	SOLIS
BANDIT	GENIE	STEELWRIST
BILLY GOAT	HLA	STIHL
BOSS	HONDA	TERRAIN KING
CHICAGO PNEUMATIC	HUSQVARNA	WACKER NEUSON
CMP	KUBOTA	WALKER
COTECH	JLG	WALLENSTEIN
CURTIS CABS	JRCO	WOODS
ENGCON	LANDPRIDE	WRIGHT
ERSKINE	NIFTY LIFT	VELKE
FARMI	REDMAX	AND MORE...

ENGINES AND PARTS

BRIGGS AND STRATTON
BUYERS
KUBOTA
KOHLER
KAWASAKI
LAUSON (FORMERLY TECUMSEH)
PARKER
PERKINS
SUBARU
STENS
TISCO

AND MORE...

PRICES AND EQUIPMENT SUBJECT TO CHANGE WITHOUT NOTICE.
RATES DO NOT INCLUDE TRANSPORTATION.



RENTS™
ALL YOU NEED

THE BEST TRACTORS AND EQUIPMENT ON EARTH!®

Why MB RENTS?

MB Tractor and Equipment is a warranty dealer for everything we rent. That means we sell, service and sell parts for the equipment that will be on your site. **Factory-trained technicians** service and repair our rental fleet to ensure maximum equipment **reliability**. All of our rental equipment is for sale, at a great savings to our buying customers; which means there's a pretty good chance the equipment you rent from MB will be nearly new, comfortable, reliable, state of the art equipment.

MB Rents "All you need"

www.MBTRACTOR.COM

**PRICES AND EQUIPMENT SUBJECT TO CHANGE WITHOUT NOTICE.
RATES DO NOT INCLUDE TRANSPORTATION.**